



Inside the Grin

Promoting Oral Health



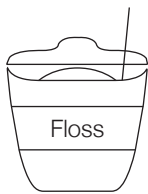
An affiliate of Delta Dental of Michigan, Ohio, Indiana, and North Carolina

DELTA DENTAL
FOUNDATION

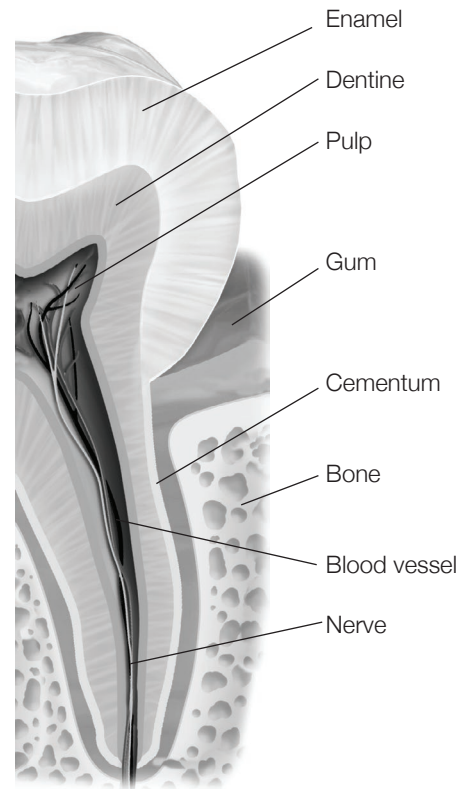
CMC



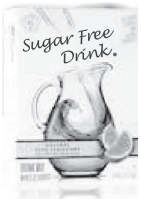
Draw a line where the floss goes between the teeth in the exhibit.



Draw the left side of the tooth.



Which of these snacks is less harmful to your teeth?



or



or



or



or



How many large teeth do you count in the exhibit?

Draw a line to match the animal with its teeth.



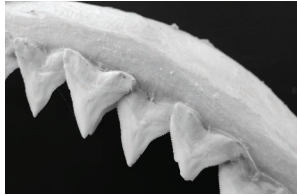
Crocodile



Shark



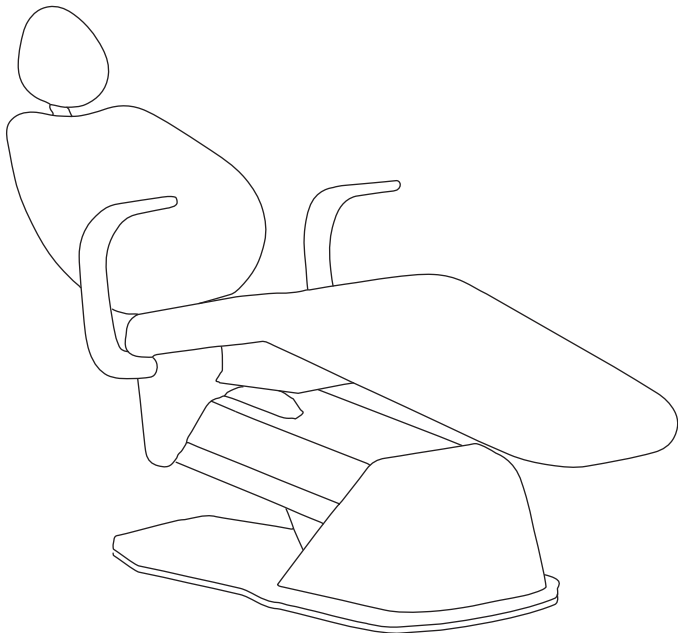
Elephant



Dog

Draw a photo of your toothbrush.

Draw yourself in the dentist's chair.



Circle the things you need to keep your mouth healthy.

