



1301 Western Ave.
Cincinnati, OH 45203

Turner Construction
50 West Court St. Ste. 300
Boston, MA 02108
Tel: 617-552-3000
Fax: 617-552-3001
E-mail: info@turnerconstruction.com

Preservation Architects

384 Broadway
Albany, NY 12207

64 Fulton St. Ste. 402
New York, NY 10038

Structural Engineer
Siman

NEW YORK, NY 10005
(212) 620-7970

THP Limited Inc.
100 East 8th St

MED Engineers

0 Connecticut Ave. Ste. 1
Washington DC 20036

MEP Engineer

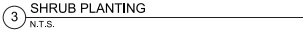
Dayton, OH 45409
10275 224 2224

Civil Engineer
Landscape Architect

West Chester, OH 45069

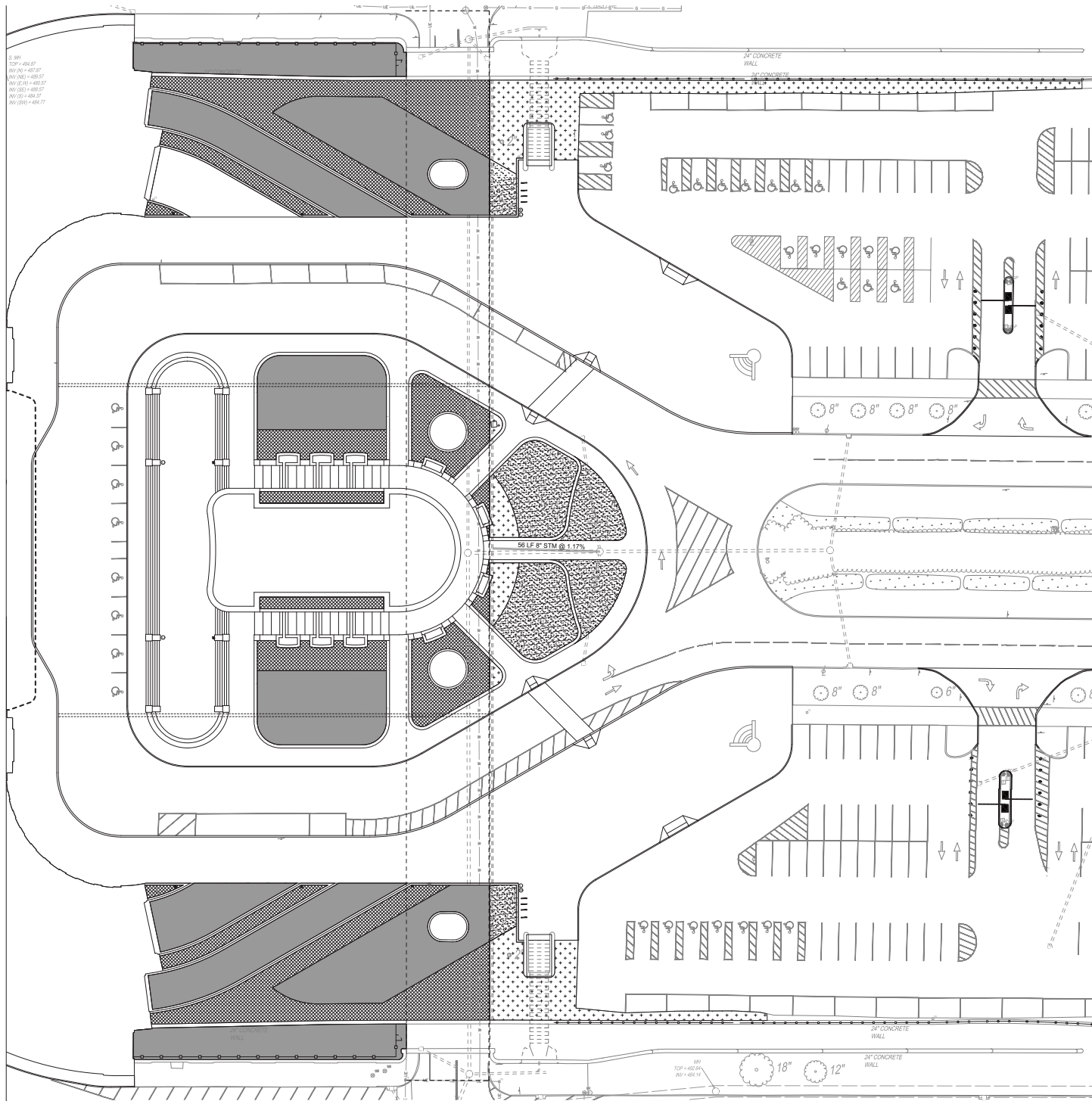
1. THE CONTRACTOR IS RESPONSIBLE FOR LOCATING AND PROTECTING ALL EXISTING UTILITIES.
2. ALL SURFACE MASSES TO BE INCORPORATED BY A CONTINUOUS MULCH BED TO LIMIT SHOWN AND AS SPECIFIED. MULCH BEDS TO HAVE A NEAT, EDGED APPEARANCE.
3. SURFACE IMPROVEMENTS SHALL BE OBSERVED. THE CONTRACTOR SHALL CONTACT THE OHIO UTILITIES PROTECTION SERVICE (OUPS) 48 HOURS BEFORE ANY EXCAVATION OR DISTURBANCE OF ANY TYPE OF UNDERGROUND UTILITY LOCATIONS. IT SHALL BE THE CONTRACTOR'S RESPONSIBILITY TO PROTECT SUCH UNDERGROUND UTILITIES.
4. ALL AREAS DISTURBED BY CONSTRUCTION SHALL BE FINE GRADED AND SODDED.
5. ALL MAINTENANCE SHALL BE IN ACCORDANCE WITH THE OHIO DEPARTMENT OF TRANSPORTATION'S SPECIFICATIONS. IF ANY MODIFICATIONS ARE APPROVED BY THE OWNER, GRADING STANDARDS SHALL CONFORM TO THOSE OF THE AMERICAN ASSOCIATION OF NURSERYMEN.

KEY	BOTANICAL NAME	COMMON NAME	SIZE	ROOT	REMARKS
SHRUBS:					
BUX GRE	BUXUS 'GREEN VELVET'	GREEN VELVET BOXWOOD	30" HT. MIN.	B&B	SPACE AT 36" O.C.
BUX MID	BUXUS MICROPHYLLA 'LUNYSIDE'	LUNYSIDE BOXWOOD	30" HT. MIN.	B&B	SPACE AT 48" O.C.
HYF CAL	HYPERICUM CALYCINUM	ST. JOHN'S WORT	#3	CONT.	SPACE AT 24" O.C.
VB CAR	VIOLARIUM CARLESII 'COMPACTUM'	COMPACT CORONAPSE VIBURNUM	30" HT. MIN.	B&B	SPACE AT 36" O.C.
GROUNDCOVERS AND PERENNIALS:					
LIRJ MUS	LIRIOPE MUSCARI 'BIG BLUE'	BIG BLUE LILYTURF	#2	CONT.	SPACE AT 18" O.C.
LIRJ VAR	LIRIOPE MUSCARI 'VARIEGATA'	VARIEGATED LILYTURF	#2	CONT.	SPACE AT 12" O.C.
ANNUALS:					
ANG ANG	ANGELONIA ANGUSTIFOLIA	BLUE SUMMER SNAPDRAGON	4"	POT	SPACE 10" O.C.
CLE HAS	CLEOME HASSLERIANA	SPIDER FLOWER	6"	POT	SPACE 15" O.C.
LAM CAM	LANTANA CAMARA 'ANNE MARIE'	ANNE MARIE LANTANA	4"	POT	SPACE 10" O.C.
NET SET	PENNIETUM SETACEUM 'YUBIRUM'	PURPLE FOUNTAIN GRASS	6"	POT	SPACE 24" O.C.
NOTE: FOR COOL, SEASON SPRING ANNUAL PLANTINGS USE COOL, WAVE PANDANES (VEXIA X VITROKARNA) AND WINTER CABAGE (BRASSICA OLERACEA). FOR COOL, SEASON FALL PLANTINGS USE FALL MUMS (CHRYSANTHEMUM SPP.). CONTRACTOR TO COORDINATE COLORS WITH OWNERS REPRESENTATIVE.					
TURFGRASS: SOO- SEE SPECIFICATIONS					



PRELIMINARY
NOT FOR
CONSTRUCTION

L302

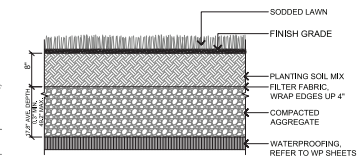


SOIL NOTES

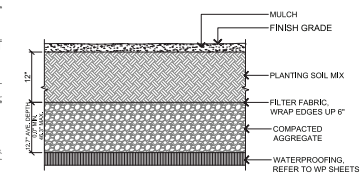
1. TOPSOIL STRIPPED FROM SITE AND REDISTRIBUTED MUST BE CLEANED AND AMENDED TO MEET THE DEFINITION OF TOPSOIL IN THE SPECIFICATION BEFORE THE SOIL WILL BE ACCEPTED FOR REDISTRIBUTION.
2. PREPARE TRANSITION ZONE ABOVE SUBSOIL IN TURF BED AND TREE PLANTING AREAS AS DESCRIBED IN THE SPECIFICATIONS AND SHOWN IN THE DETAILS.
3. ALL AREAS WITHIN GRADING LIMITS OR DISTURBED BY CONSTRUCTION ACTIVITIES AND NOT SHOWN TO RECEIVE IMPORTED SOIL ON THIS PLAN SHALL RECEIVE CLEAN AMENDED TOPSOIL AND BE SODDED PER THE SPECIFICATIONS.
4. TOPSOIL DEPTH INDICATED IS THE FINAL DEPTH REQUIRED. COMPENSATE FOR SETTLING AND COMPACTION AS NECESSARY.
5. OVER EXCAVATE AS NECESSARY TO PROVIDE REQUIRED DEPTH OF SOIL.

LEGEND

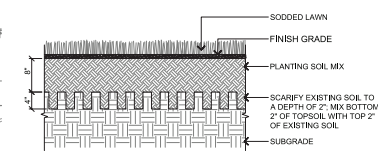
- TYPE 1 - TURF GRASS (SOD) ON STRUCTURE, 8" DEPTH, REFER TO DETAIL 1, THIS SHEET
- TYPE 2 - PLANT BED ON STRUCTURE, 12" DEPTH, REFER TO DETAIL 2, THIS SHEET
- TYPE 3 - TURF GRASS (SOD) ON GRADE, 8" DEPTH, REFER TO DETAIL 3, THIS SHEET
- TYPE 4 - PLANT BED ON GRADE, 12" DEPTH, REFER TO DETAIL 4, THIS SHEET



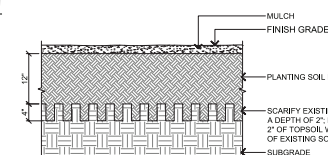
1 TYPE 1 - TURF GRASS (SOD) ON STRUCTURE
SCALE: 1" = 1'-0"



2 TYPE 2 - PLANT BED ON STRUCTURE
SCALE: 1" = 1'-0"



3 TYPE 3 - TURF GRASS (SOD) ON GRADE
SCALE: 1" = 1'-0"



4 TYPE 4 - PLANT BED ON GRADE
SCALE: 1" = 1'-0"

Project Architect
GBBN Architects Inc.
332 East 8th Street
Cincinnati, OH 45202
T (513) 241-8700
F (513) 241-8873
http://www.gbbn.com

UNION TERMINAL CORPORATION
1301 Western Ave.
Cincinnati, OH 45203

Construction Manager
Turner Construction
250 West Court St., Ste. 300
Cincinnati, OH 45202
(513) 721-4224

Preservation Architect
John G. Wale Assoc. Architects
364 Broadway
Albany, NY 12207
(518) 448-5440
64 Fulton St., Ste. 402
New York, NY 10038
(212) 619-4881

Structural Engineer
Skidmore
32 Old Slip, 10th Floor
New York, NY 10005
(212) 633-3070

Structural Engineer
THP Limited, Inc.
100 East 8th St.
Cincinnati, OH 45202
(513) 241-3222

MEP Engineer
Arup
1120 Connecticut Ave., Ste. 1110
Washington, DC 20036
(202) 724-9220

MEP Engineer
Heapy Engineering
1400 West Dorothy Ln.
Dayton, OH 45426
(937) 224-8961

Civil Engineer
The Mergers Group
6305 Centre Park Dr.
West Chester, OH 45389
(513) 778-7801

Drawing Title: **CONSTRUCTION DOCUMENTS PACKAGE E - EXTERIOR/SITE**

No.	Date	Description
1	06/17/16	OMP - PHASE E

Drawing Title: **SOILS PLAN**

Job Number: 13513.01

Scale: 1" = 10'-0"

Date: 06/17/16

PRELIMINARY
NOT FOR
CONSTRUCTION

L200



1 CONCRETE
SCALE: 1" = 1'-0"

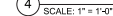
SCALE: 1" = 1'-0"



2 SCALE: 1/4" = 1'-0"

FENCE ELEVATION

GATE ELEVATION



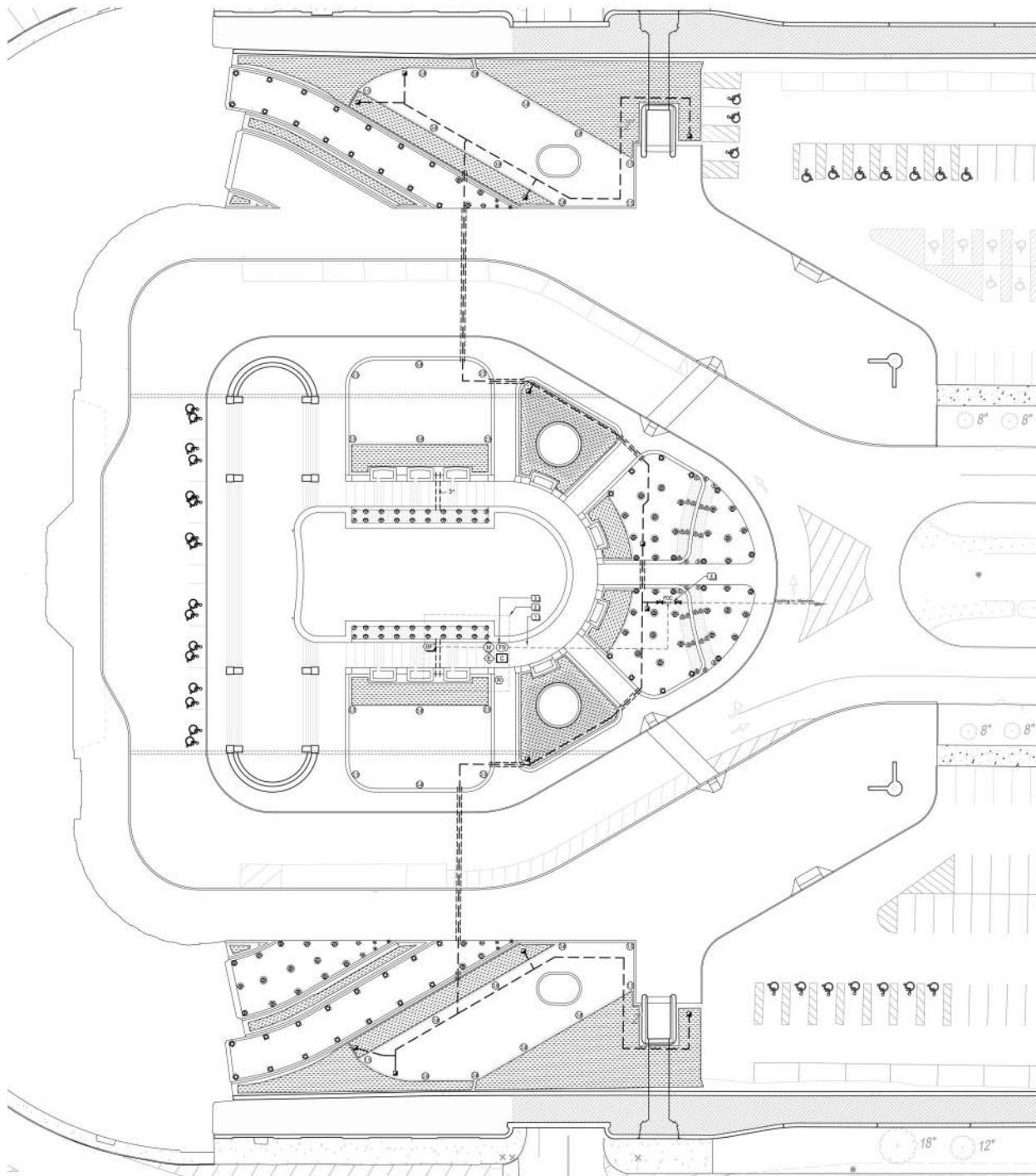
4 SCALE: 1" = 1'-0"



FENCE ELEVATION



SCALE: 1" = 1'-0"

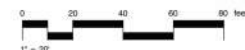


IRRIGATION SCHEDULE

SYMBOL	MANUFACTURER/MODEL/DESCRIPTION
	Rain Bird 1804-U-SAM-PRS U8 Series Turf Spray 4" Pop-Up Sprinkler with Seal-A-Matic Check Valve Pressure Regulating, U-SeriesHE-Van Nozzle
	Rain Bird 1804-U-SAM-PRS U10 Series Turf Spray 4" Pop-Up Sprinkler with Seal-A-Matic Check Valve Pressure Regulating, U-SeriesHE-Van Nozzle
	Rain Bird 1804-U-SAM-PRS U12 Series Turf Spray 4" Pop-Up Sprinkler with Seal-A-Matic Check Valve Pressure Regulating, U-SeriesHE-Van Nozzle
	Rain Bird 1804-U-SAM-PRS ADJ Turf Spray 4" Pop-Up Sprinkler with Seal-A-Matic Check Valve Pressure Regulating, U-SeriesHE-Van Nozzle
	Rain Bird 1804-SAM-PRS ADJ Turf Spray 4" Pop-Up Sprinkler with Seal-A-Matic Check Valve Pressure Regulating, VAN Nozzle
	Rain Bird 1812-SAM-PRS-U 15 Strip Series Strip Series, 12" Pop-Up Sprinkler with Seal-A-Matic Check Valve Pressure Regulating, U-SeriesHE-Van Nozzle
	Rain Bird 1812-SAM-PRS-U 18 Series Strip Series, 12" Pop-Up Sprinkler with Seal-A-Matic Check Valve Pressure Regulating, U-SeriesHE-Van Nozzle
	Rain Bird 1812-SAM-PRS-U ADJ Strip Series, 12" Pop-Up Sprinkler with Seal-A-Matic Check Valve Pressure Regulating, U-SeriesHE-Van Nozzle
SYMBOL	MANUFACTURER/MODEL/DESCRIPTION
	Rain Bird 9004-PCR Turf Rotor, 4" Pop-Up, with In-Siem Pressure Regulator
	Rain Bird 9004-PCR Turf Rotor, 4" Pop-Up, with In-Siem Pressure Regulator
	Rain Bird 9004-PCR Turf Rotor, 4" Pop-Up, with In-Siem Pressure Regulator
	Rain Bird 9004-PCR Turf Rotor, 4" Pop-Up, with In-Siem Pressure Regulator
	Rain Bird 9004-PCR Turf Rotor, 4" Pop-Up, with In-Siem Pressure Regulator
SYMBOL	MANUFACTURER/MODEL/DESCRIPTION
	Area to Receive Drift Rain Bird RVCV-06-18 RVCV On-Surface Landscape Drift with a Heavy Duty 3/8 psi Check Valve, 5/8" GPM orifice at 15' O.C. Driftline laterals Spaced approximately 18" apart. Install in right-of-way or in both sides of landscape if only single row of planting exists.
SYMBOL	MANUFACTURER/MODEL/DESCRIPTION
	Rain Bird PGA Series Valve 1" 1-1/2" 2" Electric Remote Control Valve
	Rain Bird 5-RC 1" Brass Quick-Coupling Valve, installed with Lanco Uniflo Swing Joint with Snap-Lok Stabilizer
	Nelson T-115-6 Class 125 bronze gate shut-off valve with cross handle, same size as mainline pipe diameter at valve location.
	Rain Bird PGB Master Valve 2" 2" Master Valve
	Rain Bird CSPLX-MEP Install modules to get a 48 Station flow sensing Commercial Controller. Mounted on a Plastic Wall Mount. Irrigation contractor to remove existing controllers and return to Owner, and to install existing zone control valves, into new Controller.
	Rain Bird WR2-RFS Wireless Rain/Freeze Sensor. Locate on exterior of building, per Manufacturer's recommendations.
	Rain Bird IQ-NCC-EN Irrigation Controller to install IQ NCC Ethernet Cartridge into controller to upgrade to an IQ ready variable controller. Includes embedded Ethernet Network Module with RJ-45 Port, and Patch Cable. Requires LAN network data: IP address.
	Rain Bird FS-200-P 2" Flow Sensor. Install per Manufacturer's requirements.
	Existing Backflow Device Estimated location shown
	3" Irrigation Connection from below
	Ingestion Mainline PVC Class 200 SDR 21
	Pipe Sleeve PVC Schedule 40 Min. Sleeve Size 3" Unless Noted
	Valve Legend Main Line Main Line Main Line

REFERENCE NOTES SCHEDULE

SYMBOL	DESCRIPTION
	Existing 3" PVC below, to irrigation system at grade
	Irrigation equipment to be located in Fountain Pump Room below
	Irrigation Contractor to cut into existing 3" PVC mainline and install Master Valve & Flow Sensor & wire to new controller. Maintain minimum distances between equipment, per Manufacturer's recommendations.
	Locate existing irrigation mainline and reconnect to new irrigation POC. Install new wire back to new controller (if necessary), & program existing zones.



GBBN

architects

Project Architect

GBBN Architects Inc.

332 East 8th Street

Cincinnati, OH 45202

T (513) 241-4800

F (513) 241-8873

http://www.gbbn.com

CINCINNATI UNION TERMINAL
RENOVATION & RESTORATION

1301 Western Ave., Cincinnati, OH 45203

UNION TERMINAL
CORPORATION

1301 Western Ave.

Cincinnati, OH 45203

Construction Manager

Turner Construction

250 West Court St. Ste. 300

Cincinnati, OH 45202

(513) 721-4224

Preservation Architect

John G. Wille Assoc. Architects

394 Broadway

Albany, NY 12207

(518) 443-5440

64 Fulton St. Ste. 402

New York, NY 10038

(212) 613-6861

Structural Engineer

Stern

32 Oak St., 10th Floor

New York, NY 10035

(212) 620-7970

Structural Engineer

TIF Limited Inc.

190 East 8th St.

Cincinnati, OH 45202

(513) 241-3222

MEP Engineer

And

1120 Commercial Ave. Ste. 1110

Washington, DC 20036

(202) 729-8220

MEP Engineer

Neep Engineering

1400 West Dorothy Ln.

Darien, OH 45428

(937) 224-0861

Civil Engineer

Landscape Architect

The Koenigs Group

6305 Centre Park Dr.

West Chester, OH 45389

(913) 779-7851

C.D. IRRIGATION CONSULTANTS

686 JES J209

BOB RUTZ COMMERCIAL

Drawing Title:

CONSTRUCTION
DOCUMENTS
PACKAGE E - EXTERIOR/SITE

No. Date Description

1 06/17/18 DMF-PKG E

Drawing Title:

IRRIGATION PLAN

Job Number:

13513.01

Date:

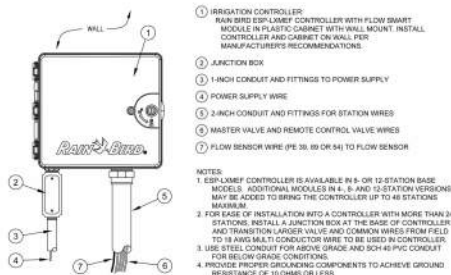
06/17/18

Scale:

AS SHOWN

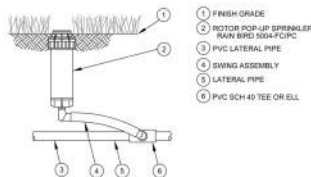
PRELIMINARY
NOT FOR
CONSTRUCTION

I100



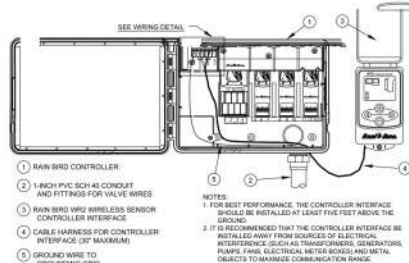
RAIN BIRD ESP-LXMEF CONTROLLER WITH FLOW SMART MODULE

SCALE: NOT TO SCALE



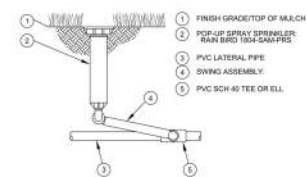
RAIN BIRD 4" ROTOR 5004-PCP

SCALE: NOT TO SCALE



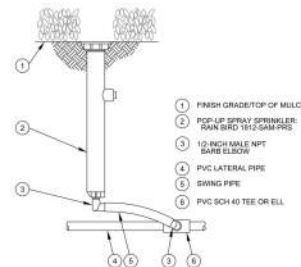
RAIN BIRD WR2 WIRELESS RAIN/FREEZE SENSOR

NOT TO SCALE



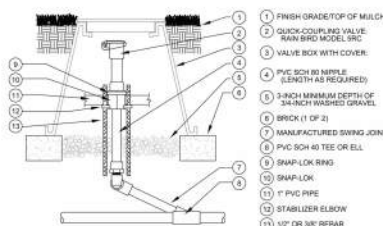
RAIN BIRD 4" FIXED SPRAY 1804-SAM-PRS

SCALE: NOT TO SCALE



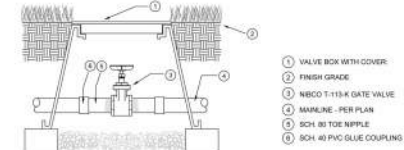
RAIN BIRD 12" FIXED SPRAY 1812-SAM-PRS

SCALE: NOT TO SCALE



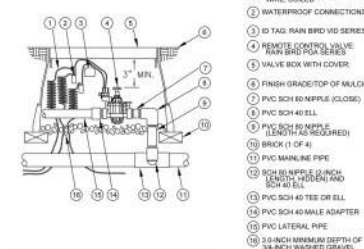
RAIN BIRD QUICK COUPLER 5RC SERIES W/ SNAP LOK

SCALE: NOT TO SCALE



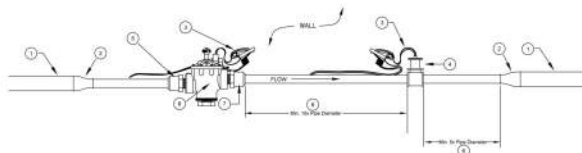
NIBCO T-113-K GATE VALVE

SCALE: NOT TO SCALE



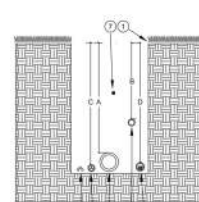
RAIN BIRD PGA SERIES ELECTRIC REMOTE CONTROL VALVE

SCALE: NOT TO SCALE



MASTER VALVE / FLOW SENSOR TYPICAL INSTALLATION

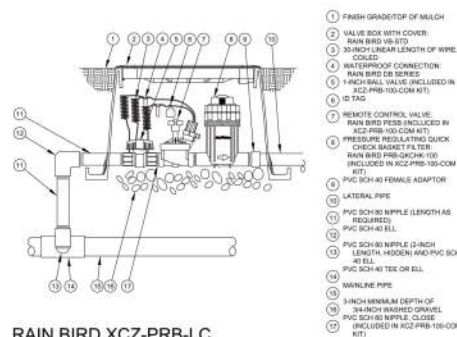
SCALE: NOT TO SCALE



TRENCH DEPTHS	A	B	C	D
PIPE SIZES 1" TO 12"	18"	12"	Per Code	18"
PIPE SIZES 12" TO 48"	24"	18"	Per Code	24"

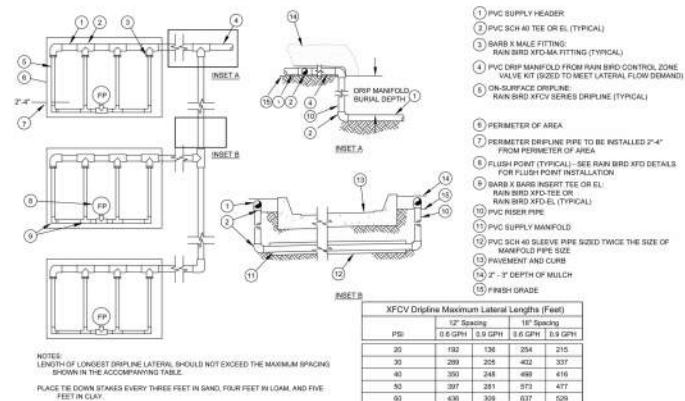
TRENCH DETAIL

SCALE: NOT TO SCALE



RAIN BIRD XCB-PRB-LC DRAIN CONTROL ZONE KIT

SCALE: NOT TO SCALE



MULTIPLE DRIN AREA DETAIL

SCALE: NOT TO SCALE

GBBN

architects

Project Architect
GBBN Architects Inc.

332 East 8th Street
Cincinnati, OH 45202
T (513) 241-8900
F (513) 241-8973
http://www.gbbn.com



CINCINNATI UNION TERMINAL
RENOVATION & RESTORATION
1301 Western Ave., Cincinnati, OH 45203

UNION TERMINAL
CORPORATION
1301 Western Ave.
Cincinnati, OH 45203

Construction Manager
Tuner Construction
250 West Court St. Ste. 300
Cincinnati, OH 45202
(513) 721-4224

Preservation Architect
John G. Wade Assoc. Architects
384 Broadway
Albany, NY 12207
(518) 443-5440
64 Fulton St. Ste. 402
New York, NY 10038
(212) 618-6861

Structural Engineer
Simer
32 Old Slip, 10th Floor
New York, NY 10038
(212) 620-7970

Structural Engineer
THF Limited Inc.
100 East 8th St.
Cincinnati, OH 45202
(513) 241-3222

MEP Engineer
And
1120 Commercial Ave. Ste. 1110
Washington DC 20036
(202) 729-8220

MEP Engineer
Neely Engineering
1400 West County Ln.
Dayton, OH 45424
(937) 234-0861

Civil Engineer
Landscape Architect
The Koenigs Group
5505 Centre Park Dr.
West Chester, OH 45389
(613) 779-7851

IRIGATION CONSULTANTS

IRIGATION CONSULTANTS

IRIGATION CONSULTANTS

IRIGATION CONSULTANTS

IRIGATION CONSULTANTS

IRIGATION CONSULTANTS

IRIGATION CONSULTANTS

IRIGATION CONSULTANTS

IRIGATION CONSULTANTS

IRIGATION CONSULTANTS

IRIGATION CONSULTANTS

IRIGATION CONSULTANTS

IRIGATION CONSULTANTS

IRIGATION CONSULTANTS

IRIGATION CONSULTANTS

IRIGATION CONSULTANTS

IRIGATION CONSULTANTS

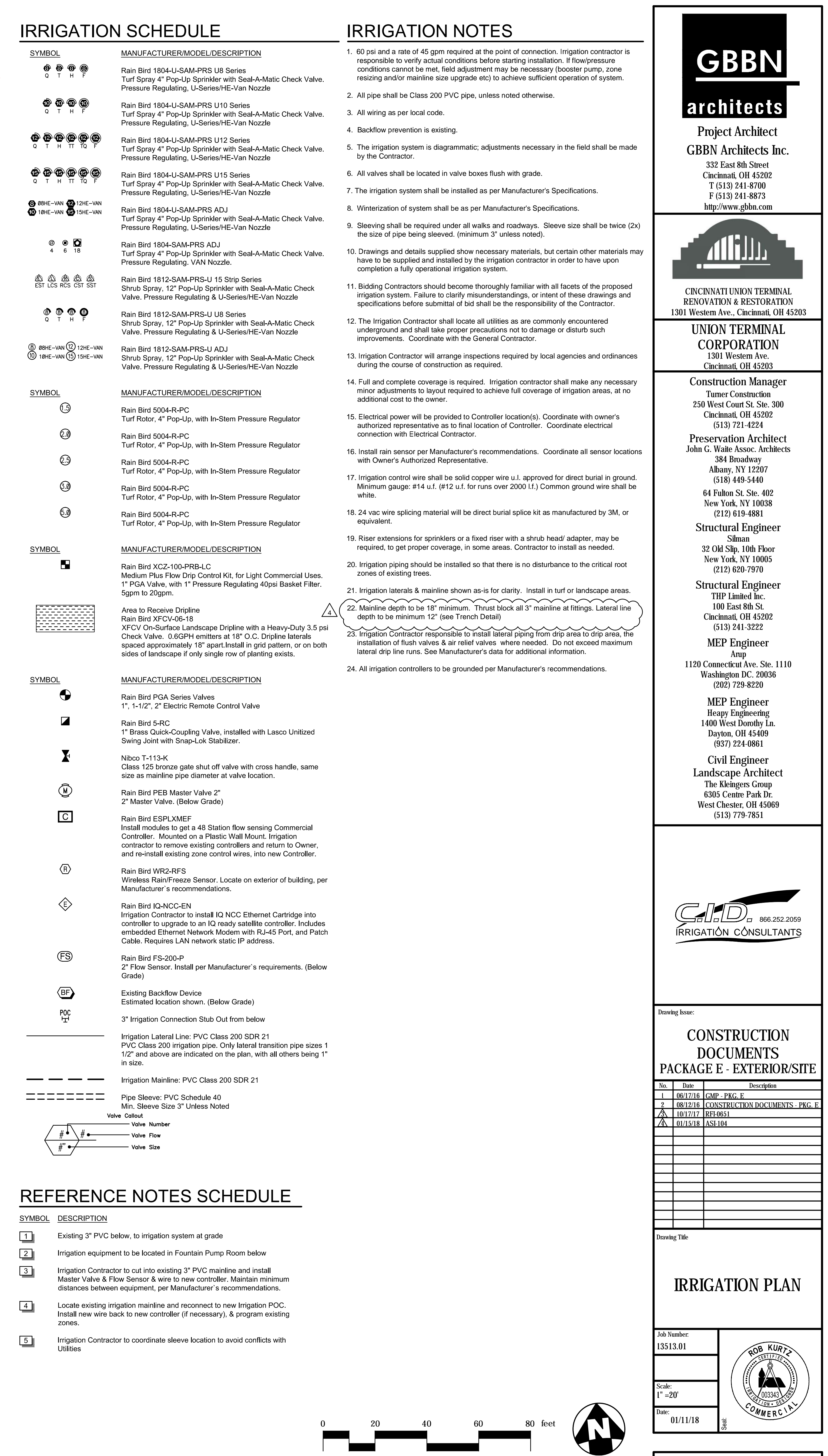
IRIGATION CONSULTANTS

IRIGATION CONSULTANTS

IRIGATION CONSULTANTS

IRIGATION CONSULTANTS

IRIGATION CONSULTANTS



PROJECT TITLE

Cincinnati Union
Terminal
Additional Irrigation

SHEET TITLE

Irrigation Plan

PROJECT NUMBER

2018-RSR-87

DATE

5-31-2018

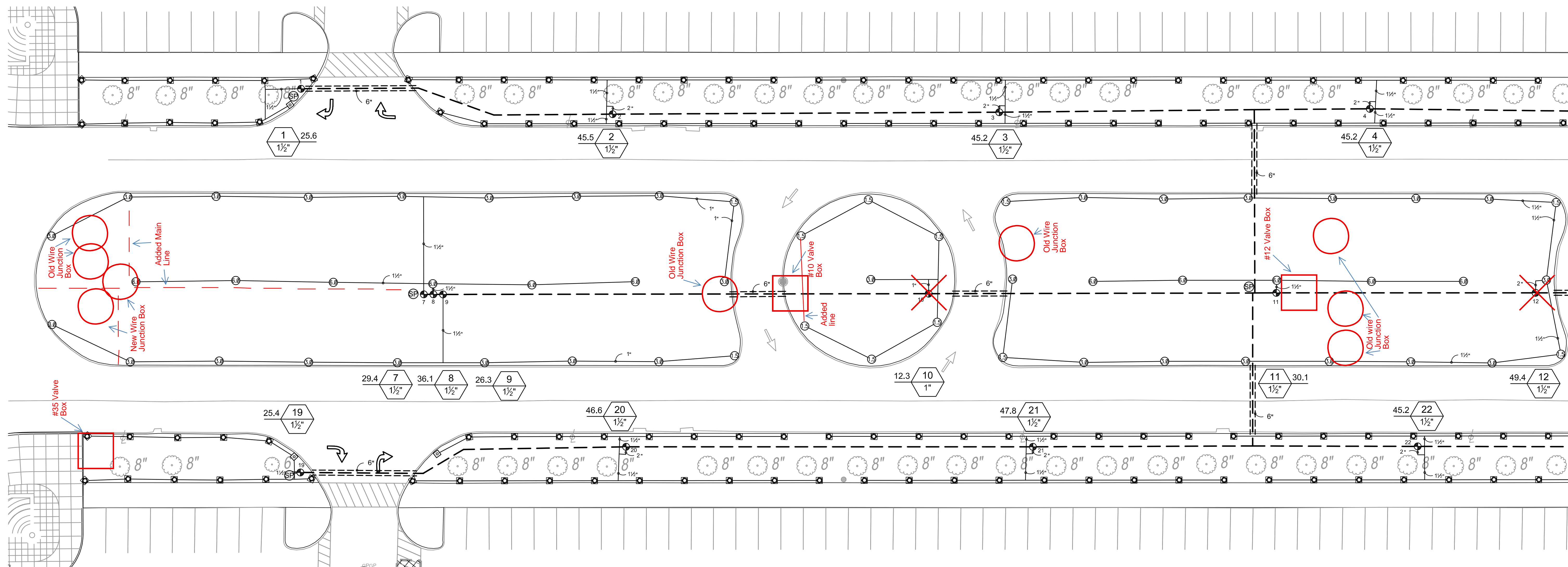
REVISIONS

9-6-2018

SHEET NUMBER

1 / 1

Matchline



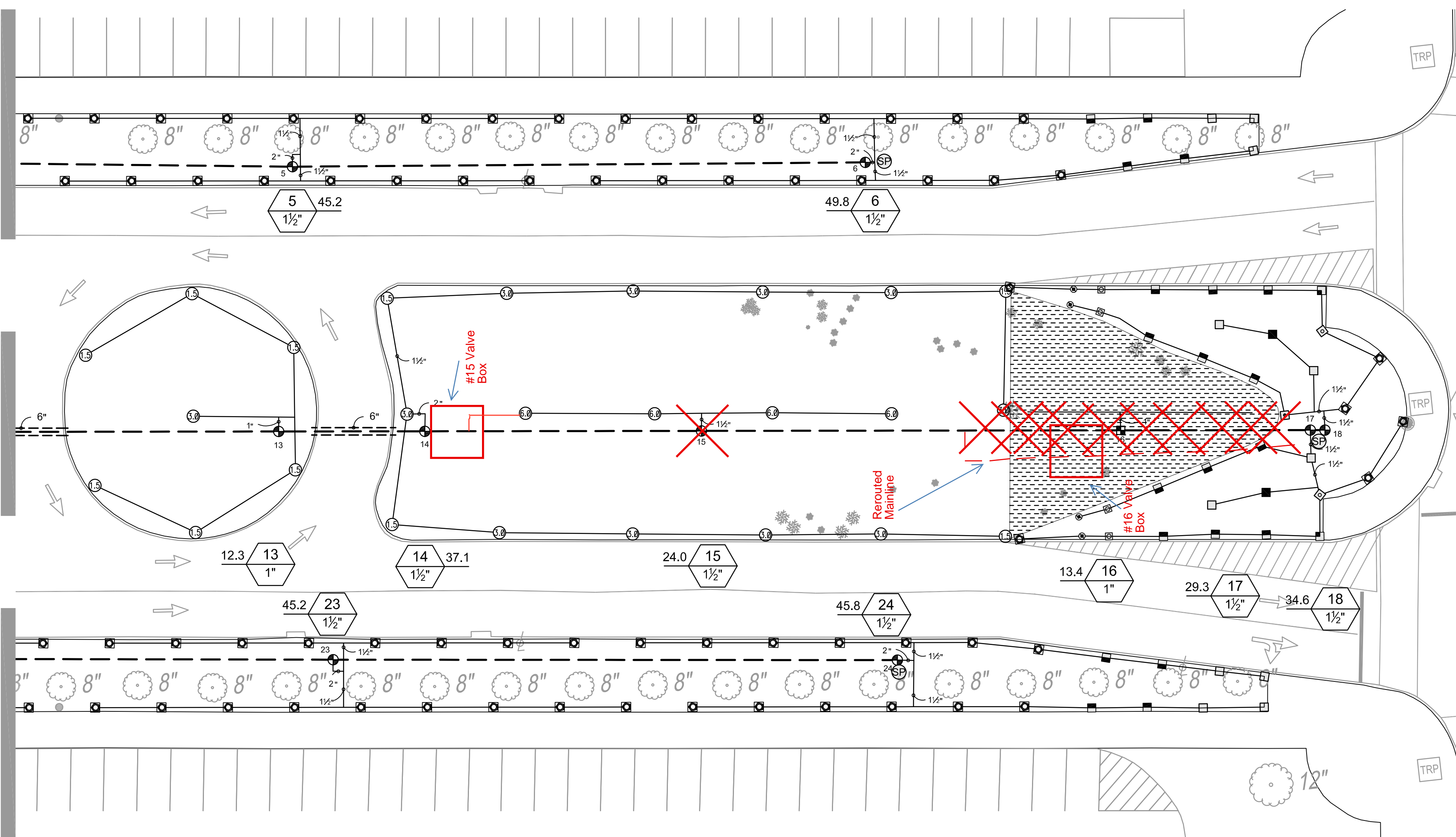
IRRIGATION SCHEDULE

SYMBOL	MANUFACTURER/MODEL/DESCRIPTION
	Rain Bird 1804-SAM-PRS 8 Series MPR Turf Spray 4" Pop-Up Sprinkler with Seal-A-Matic Check Valve. Pressure Regulating. VAN Nozzle.
	Rain Bird 1804-SAM-PRS 12 Series MPR Turf Spray 4" Pop-Up Sprinkler with Seal-A-Matic Check Valve. Pressure Regulating. VAN Nozzle.
	Rain Bird 1804-SAM-PRS 15 Series MPR Turf Spray 4" Pop-Up Sprinkler with Seal-A-Matic Check Valve. Pressure Regulating. VAN Nozzle.
	Rain Bird 1804-SAM-PRS ADJ Turf Spray 4" Pop-Up Sprinkler with Seal-A-Matic Check Valve. Pressure Regulating. VAN Nozzle.
	Rain Bird 1804-SAM-PRS ADJ Turf Spray 4" Pop-Up Sprinkler with Seal-A-Matic Check Valve. Pressure Regulating. VAN Nozzle.
SYMBOL	MANUFACTURER/MODEL/DESCRIPTION
	Rain Bird 5004-R-PC Turf Rotor, 4" Pop-Up, with In-Stream Pressure Regulator
	Rain Bird 5004-R-PC Turf Rotor, 4" Pop-Up, with In-Stream Pressure Regulator
	Rain Bird 5004-R-PC Turf Rotor, 4" Pop-Up, with In-Stream Pressure Regulator
	Rain Bird 5004-R-PC Turf Rotor, 4" Pop-Up, with In-Stream Pressure Regulator
SYMBOL	MANUFACTURER/MODEL/DESCRIPTION
	Rain Bird XCV-100-PRB-LC Medium Plus Flow Drip Control Kit, for Light Commercial Uses. 1" PGA Valve, with 1" Pressure Regulating 40psi Basket Filter. 5gpm to 20gpm. Install One Rain Bird FD-101 2-Wire Decoder with each Valve.
	Area to Receive Dripline Rain Bird XCV-06-18 XFCV On-Surface Landscape Dripline with a Heavy-Duty 3.5 psi Check Valve. 0.6GPH emitters at 18" O.C. Dripline laterals spaced approximately 18" apart. Install in grid pattern, or on both sides of landscape if only single row of planting exists.
SYMBOL	MANUFACTURER/MODEL/DESCRIPTION
	Rain Bird PGA Series Valves 1", 1-1/2" Electric Remote Control Valve. Install One Rain Bird FD-101 2-Wire Decoder with each Valve.
	Rain Bird LSP-1TURF Line surge protection decoder directly to the ground rod or ground plate
	Irrigation Lateral Line: PVC Class 200 SDR 21
	Irrigation Mainline: PVC Class 200 SDR 21
	Pipe Sleeve: PVC Schedule 40 Min. Sleeve Size 3" Unless Noted
	Valve Cutoff
	Valve Number
	Valve Flow
	Valve Size

IRRIGATION NOTES

- This system is to be added on to the existing irrigation system. Connect to existing 3" mainline for hydraulics and existing 2-Wire path for electric controls. Each solenoid valve shall include a Rain Bird FD-101 decoder. 70 psi and a rate of 50 gpm required for operation of these zones. Irrigation contractor is responsible to verify actual conditions before starting installation. If flow and/or pressure conditions cannot be met, field adjustment may be necessary, such as addition of a Booster Pump, or resizing zones and/or mainline size upgrade etc., to achieve sufficient operation of system.
- All pipe shall be Class 200 PVC pipe, unless noted otherwise. If HDPE mainline is not used, as designed, refer to Note "27" (edit as needed), regarding Joint Restraints.
- All wiring as per local code.
- Backflow prevention as per local code. See Plumbing Plans, if available.
- The irrigation system is diagrammatic; adjustments necessary in the field shall be made by the Contractor.
- All valves shall be located in valve boxes flush with grade.
- The irrigation system shall be installed as per Manufacturer's Specifications.
- Winterization of system shall be as per Manufacturer's Specifications.
- Sleeving shall be required under all walks and roadways. Sleeve size shall be twice (2x) the size of pipe being sleeved. (minimum 3" unless noted).
- Drawings and details supplied show necessary materials, but certain other materials may have to be supplied and installed by the Irrigation Contractor in order to have upon completion a fully operational irrigation system.
- Bidding Contractors should become thoroughly familiar with all facets of the proposed irrigation system. Failure to clarify misunderstandings, or intent of these drawings and specifications before submittal of bid shall be the responsibility of the Contractor.
- The Irrigation Contractor shall locate all utilities as are commonly encountered underground and shall take proper precautions not to damage or disturb such improvements. Coordinate with the General Contractor.
- Irrigation Contractor will arrange inspections required by local agencies and ordinances during the course of construction as required.
- Full and complete coverage is required. Irrigation contractor shall make any necessary minor adjustments to layout required to achieve full coverage of irrigation areas, at no additional cost to the owner.
- Electrical power will be provided to controller location(s). Coordinate with owner's authorized representative as to final location of controller. Coordinate electrical connection with Electrical Contractor.
- Install rain sensor(s) tipping rain gauge per Manufacturer's recommendations. Coordinate all sensor locations with Owner's Authorized Representative.
- Irrigation control wire shall be Rain Bird Maxi-Cable. Control wire will be solid copper wire u.l. approved for direct burial in ground. Minimum gauge: #14 u.l.
- 24 vac wire splicing material will be direct burial splice kit as manufactured by 3M, or equivalent.
- Riser extensions for sprinklers or a fixed riser with a shrub head/ adapter, may be required, to get proper coverage, in some areas. Contractor to install as needed.
- Irrigation piping should be installed so that there is no disturbance to the critical root zones of existing trees.
- Irrigation laterals & mainline shown as-is for clarity. Install in turf or landscape areas.
- Mainline depth to be 18" minimum. Lateral line depth to be minimum 12".
- Irrigation Contractor responsible to install lateral piping from drip area to drip area, the installation of flush valves & air relief valves where needed. Do not exceed maximum lateral drip line runs. See Manufacturer's data for additional information.
- All irrigation controllers & decoder systems to be grounded per Manufacturer's recommendations.
- Irrigation Contractor to select & install appropriate decoders where required.
- All mainline 3" & above to be gasketed pvc pipe. Install Joint Restraints on all changes of direction AND all joints within the calculated length from restrained fittings, must also be restrained. See Joint Restraint Manufacturer for calculations. Thrust Blocks are not accepted.

Matchline



0 20 40 60 feet
SCALE: 1" = 20'